

## **ODIN Diet 10.0.2.0**

### **Overview:**

---

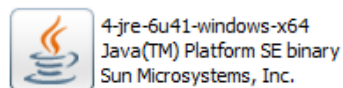
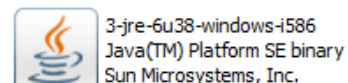
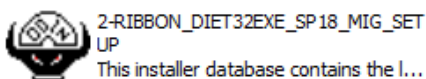
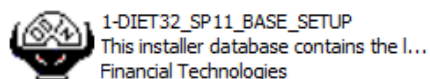
This product is a high-end, integrated multi-segment Internet trading application for End Clients. Existing **ODINTM** users can provide 'direct Internet trading facility' to their clients without investing much on hardware or network. The application architecture facilitates the broker to maintain uniform Risk & Surveillance Management for its clients. This document contains additional currency features which are quite advanced as provided in the version 10.0.2.0.

It provides streaming quotes on a real-time basis and has the feature to send buy/sell order request directly to the exchange.

This product is capable of functioning on heterogeneous network platforms and ensures utmost performance and scalability thereby facilitating anywhere any time trading environment. It is user-friendly in a manner that the size of the application is shrink-wrapped to ease the distribution and availability of the trading front-end.

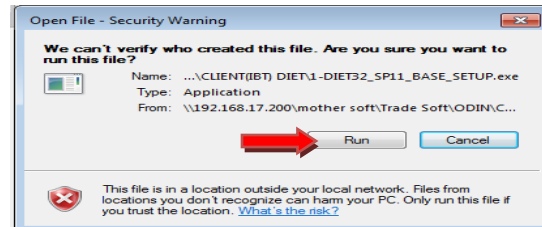
ODINTM Diet uses the industry standard Secure Sockets Layer (SSL) protocol for ensuring data privacy over the internet. ODINTM Diet inactivates at the workstation and locks the workstation accordingly; only authenticated users can access.

**Installation:** Download following files and save it to desktop to install Odin Diet.



- **1-DIET32\_SP11\_BASE\_SETUP:** Setup File
- **2-RIBBON\_DIET32EXE\_SP18\_MIG\_SETUP:** Patch File
- **3-jre-6u38-windows-i586:** Compatible for 32 bit Operating System
- **4-jre-6u41-windows-x64:** Compatible for 64 bit Operating System

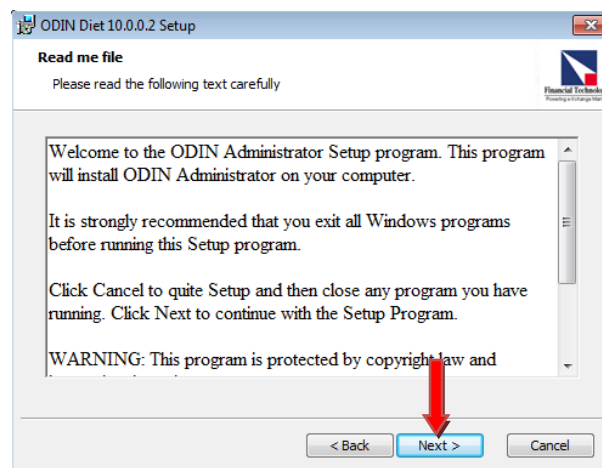
- Double click on “1-DIET32\_SP11\_BASE\_SETUP” icon.
- Click on “Run”.



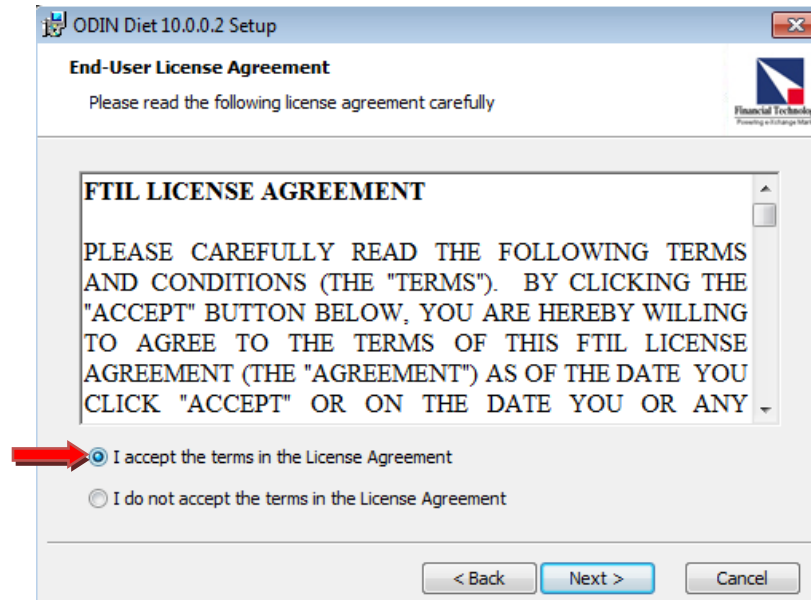
- Click on “Next” to continue.



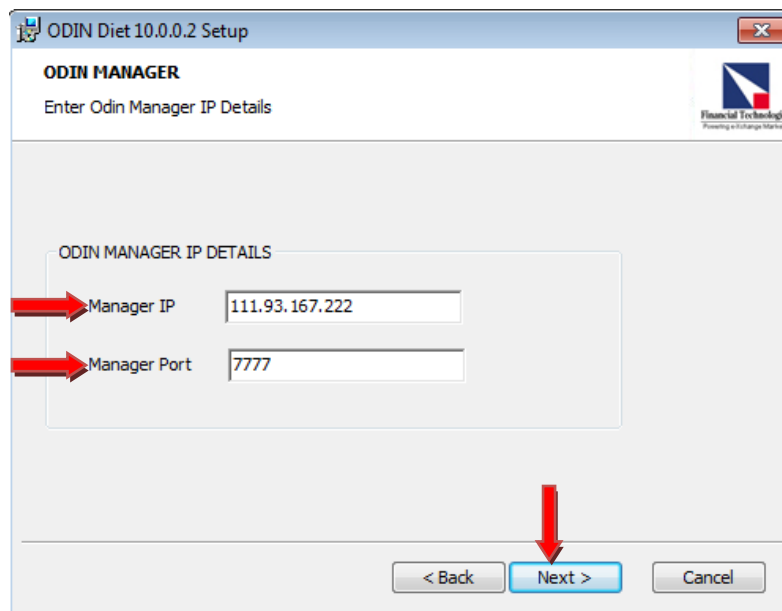
- Click on “Next” to continue.



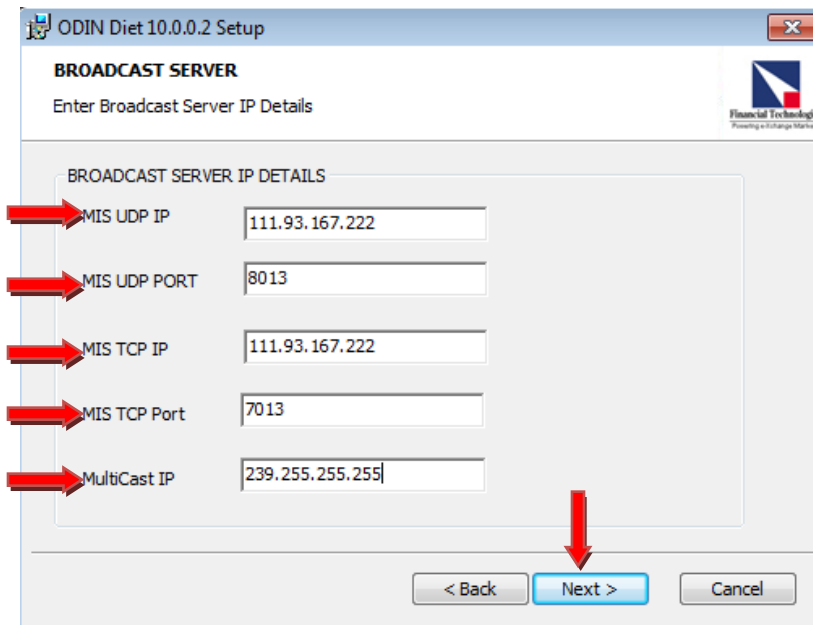
- Tick on declaration checkbox.
- Click on **“Next”**.



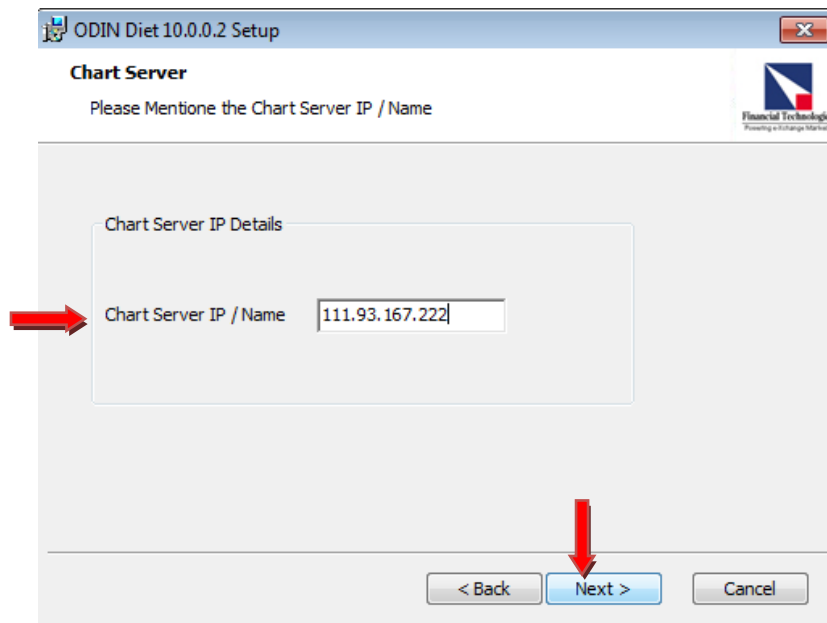
- Enter **“Manager IP”**.
- Enter **“Manager Port”**.
- Click on **“Next”**.



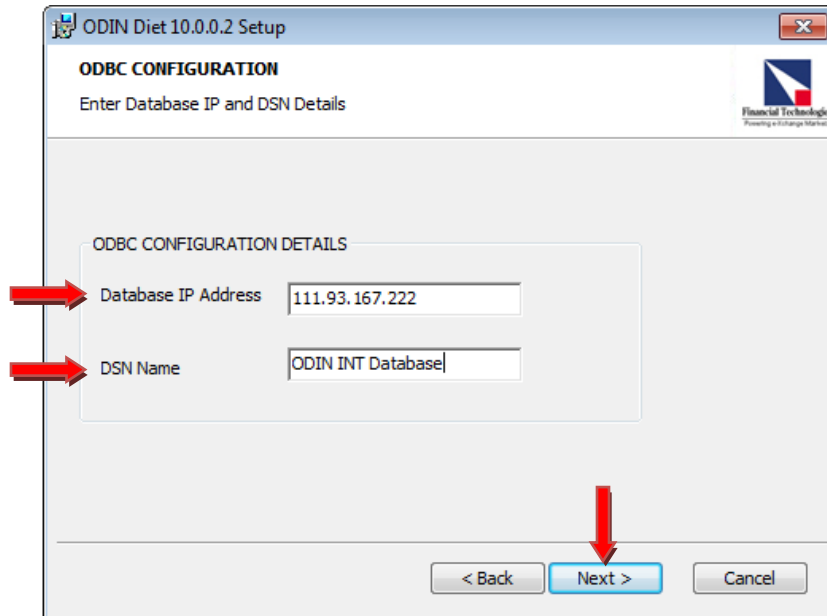
- Enter **IP** and **Port** as per indication.
- Click on **“Next”**.



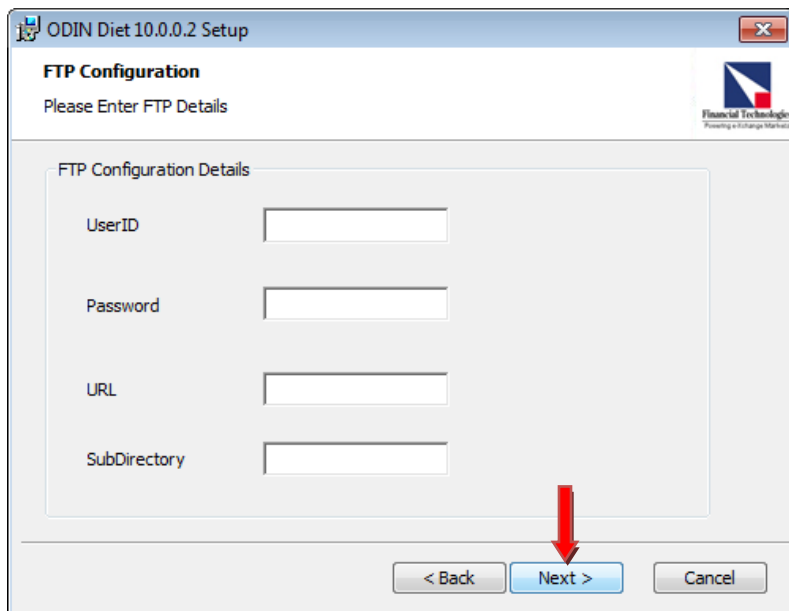
- Enter **Chart Server IP/Name** and Click on **“Next”**.



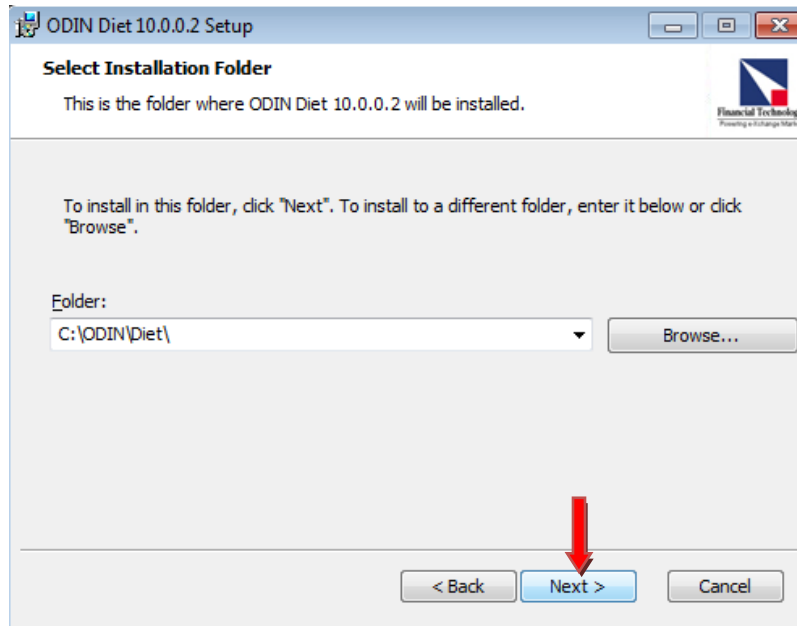
- Enter “**Database IP Address**”.
- Enter “**DSN Name**”.
- Click on “**Next**”.



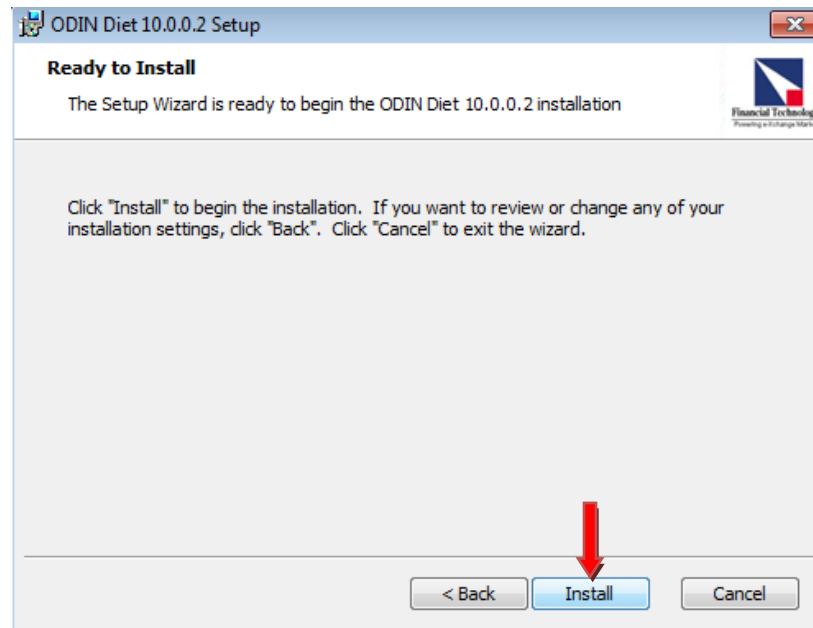
- Leave all windows blank.
- Click on “**Next**”.



- Click on “**Next**” to continue.



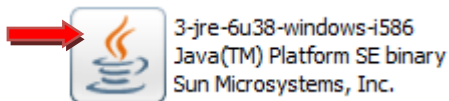
- Click on “**Install**”.



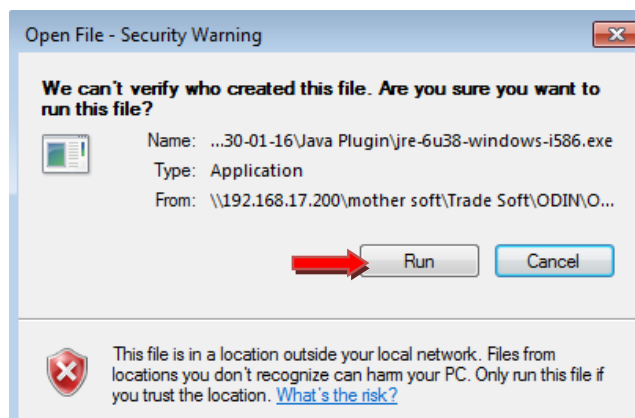
- Click on **"Finish"**.



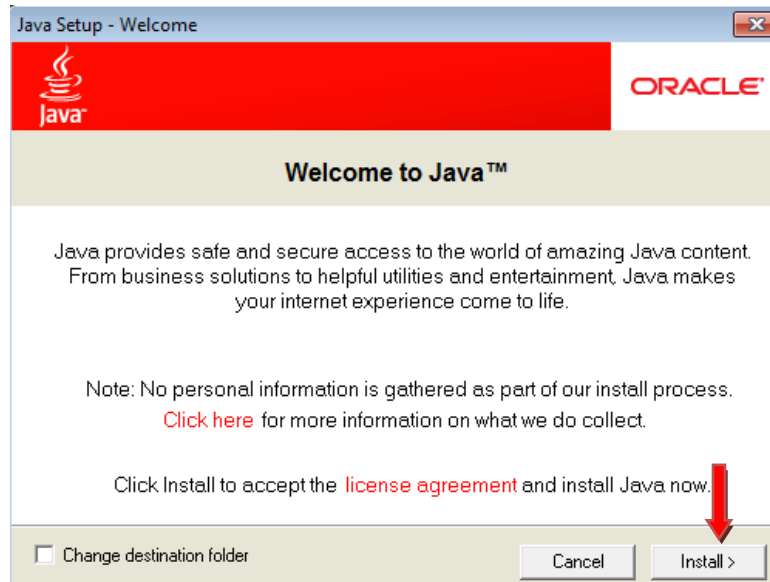
- Double Click on **Java** icon.



- Click on **"Run"**.



- Click on **“Install”**.



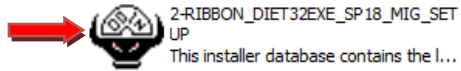
- Click **“Close”** after successful installation of Java.



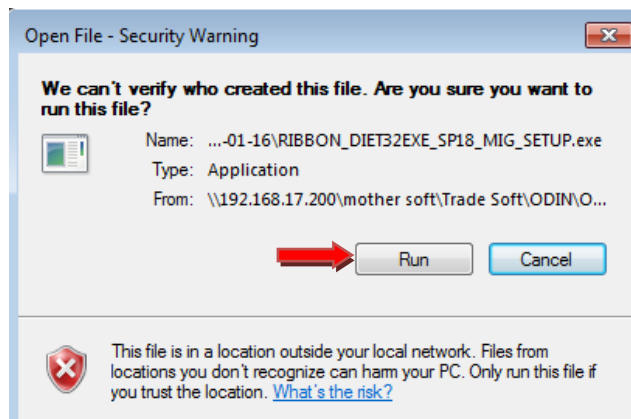


## 2-RIBBON\_DIET32EXE\_SP18\_MIG\_SETUP:

- Double click on icon.



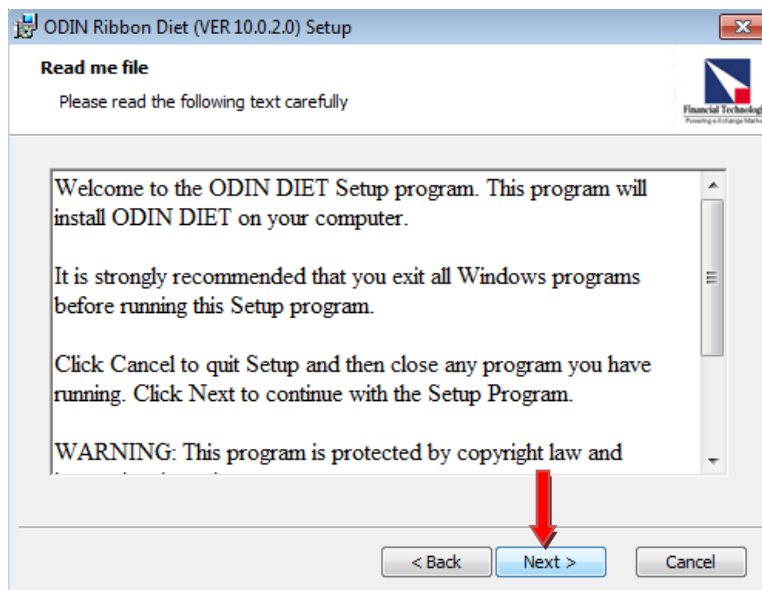
- Click on **“Run”**.



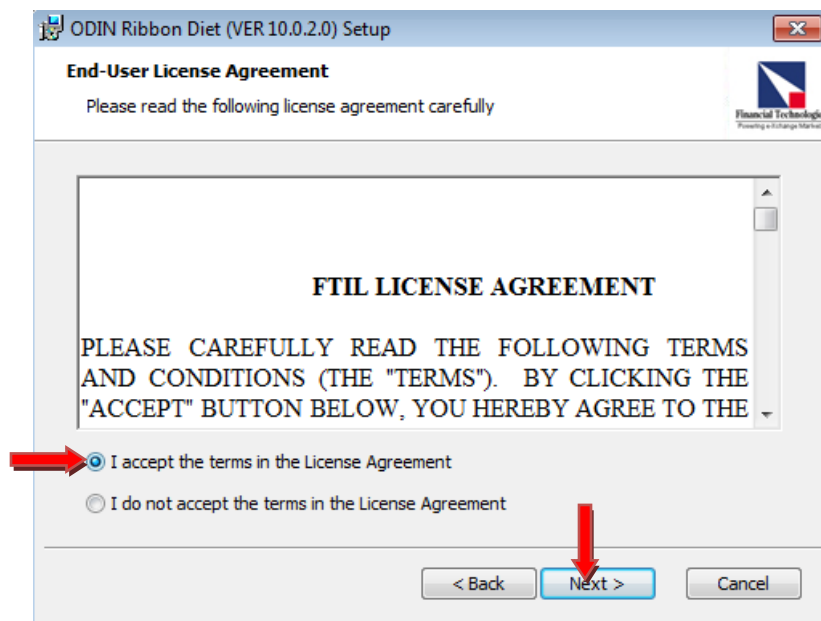
- Click on **“Next”** to continue.



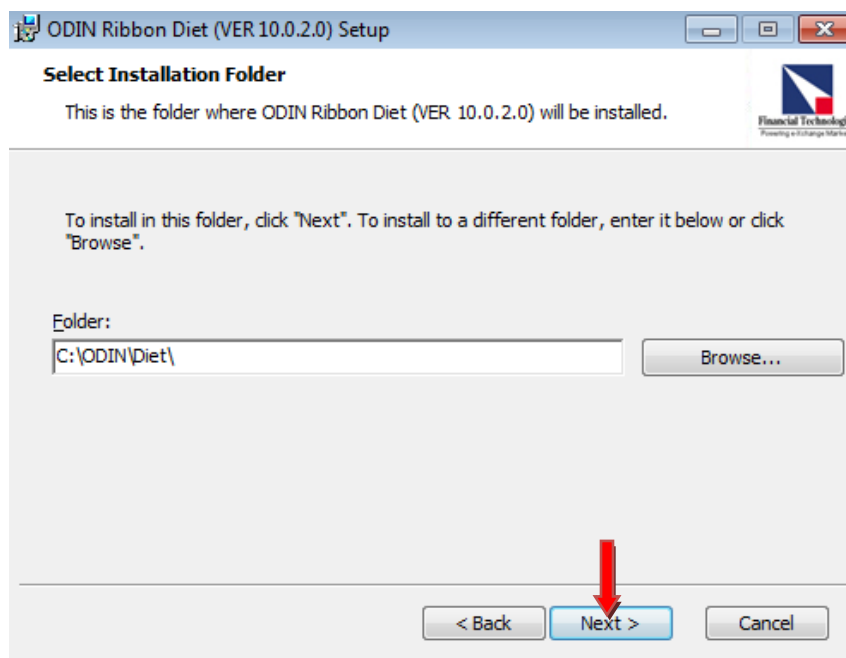
- Click on “**Next**” to Continue.



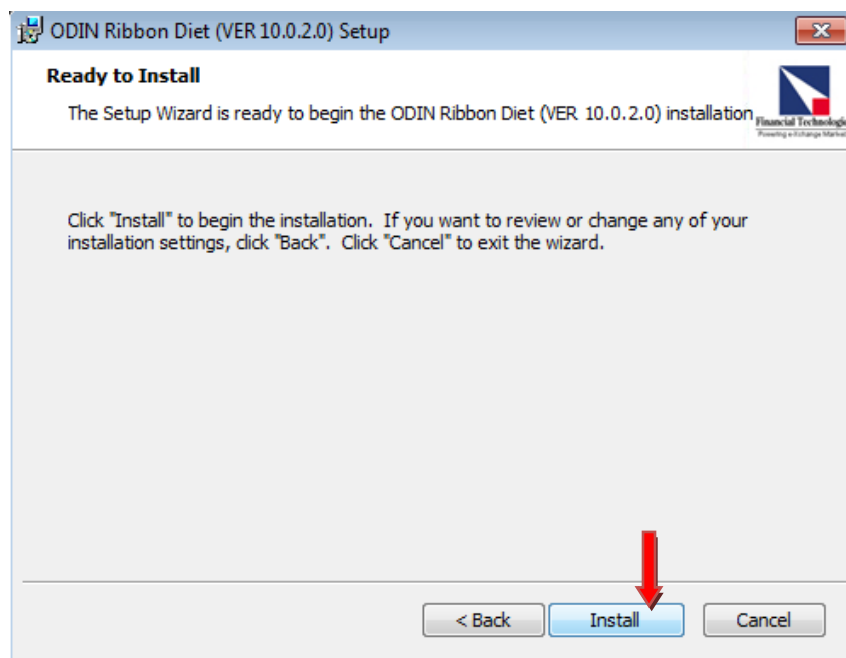
- Tick on the declaration checkbox.
- Click on “**Next**”.



- Select destination folder for installation.
- Click on **“Next”**.



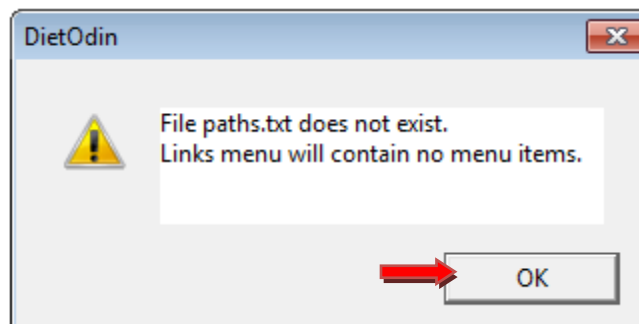
- Click on **“Install”**.



- Tick on **"Run vcredist\_x86.exe"**.
- Click on **"Finish"**.



- Click on **"OK"** if following messages appear.
- If error occurs again, call our support desk (**033- 4044 2727**).

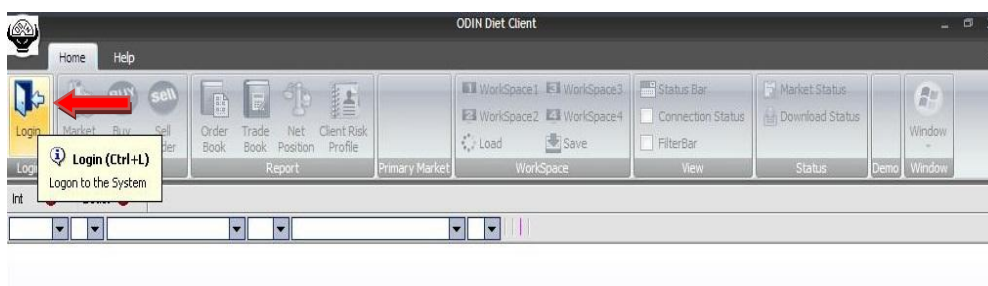


Login to **ODIN DIET** Online Trading Platform

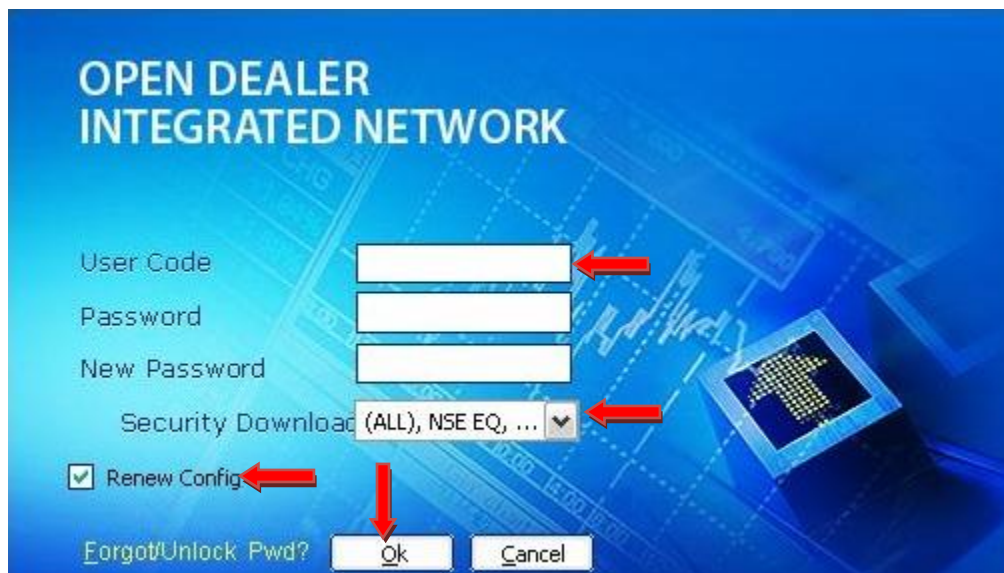
- For logging to your trading account, follow these steps:
- Double click on the '**ODIN Diet 10.0.2.0**' icon.



- ODIN DIET** application is launched.
- Click on the Login icon on the extreme left of the application screen.



- The application login window appears



- Enter ODIN DIET **User Code** (i.e. Client Code) assigned to you by email.
- New Password should contain minimum six alphanumeric characters.
- Retype **New Password**.
- Tick all checkboxes for which trading is available under security downloads. This will enable the auto downloading of the daily scrip master files.
- Click on **OK**. The application would ask you to re-confirm the new password that you have set.

**OPEN DEALER INTEGRATED NETWORK**

User Code: CO007

Password: [masked]

New Password: [masked]

Security Download: (ALL), NSE EQ, ...

☒ Renew Config

[Forgot/Unlock Pwd?](#)

- Enter **New Password** for re-confirmation.
- New Password is required only for first time login or forget password request.

**OPEN DEALER INTEGRATED NETWORK**

User Code

Password

New Password

Security Download

☒ Renew Config

[Forgot/Unlock Pwd?](#)

**Confirm Password**

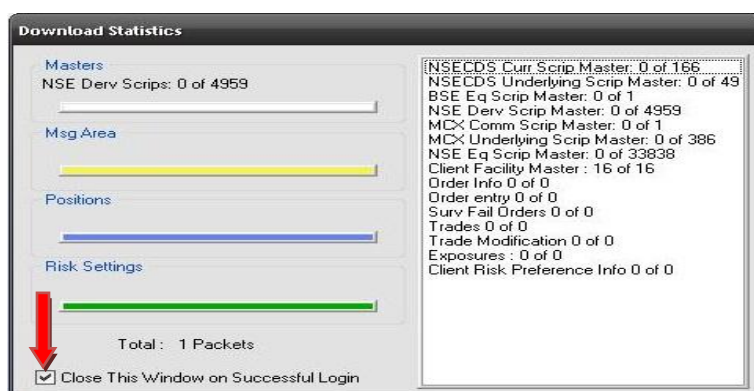
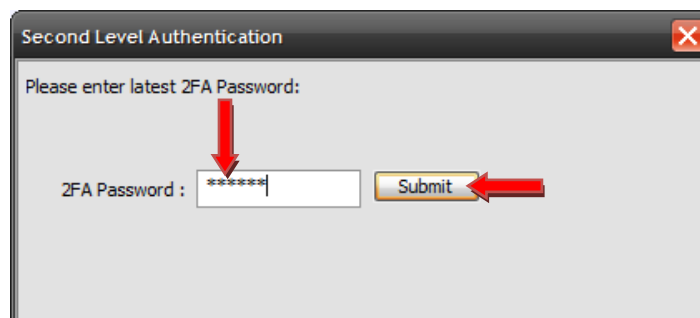
Please reenter your password to confirm it.

New Password: [masked]

Confirm New Password: [masked]



- Enter **2FA Password** (Sent to your email).
- Click on **"Submit"**.
- Tick on the icon after successful login process.

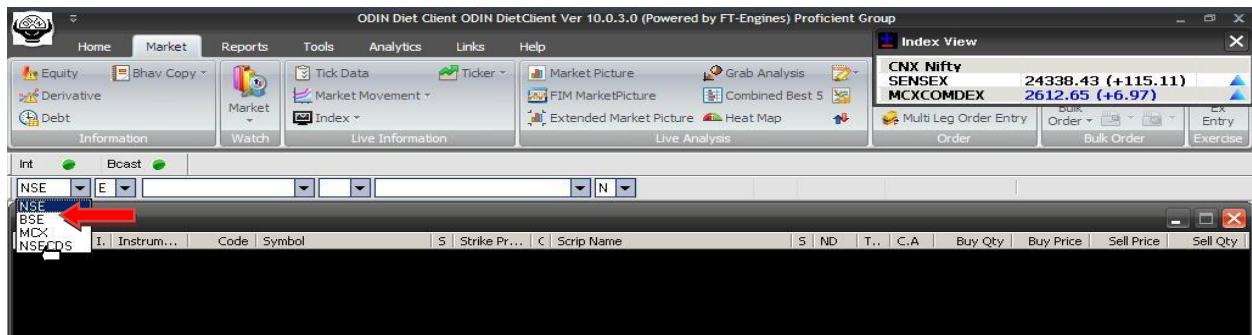


### Market Watch

- Click on **Market Watch** icon or Hit **F4** key.
- The screen will be displayed as per below.
- In market watch window, changes in the best price and quantities are highlighted/ displayed in real time.
- Blue colour indicates an increase in any particular scrip.
- Red colour indicates a decrease in price/quantities.
- No change in colour indicates that prices / quantities have not changed.
- Multiple market watch window can be opened simultaneously.



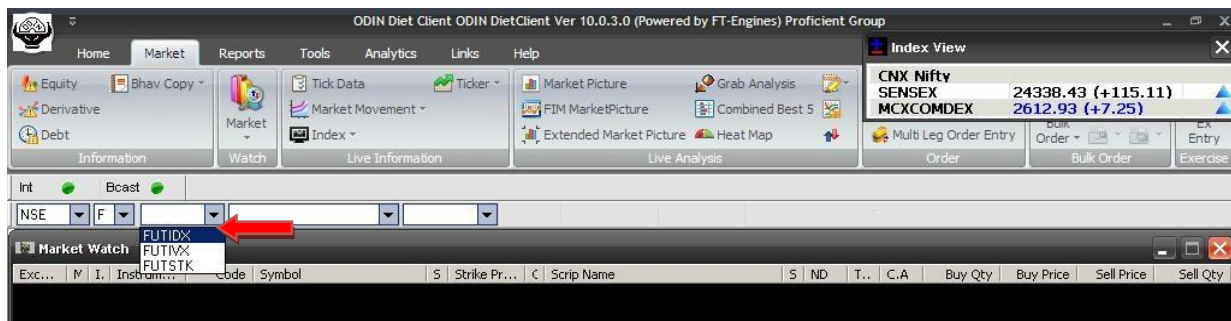
- Select **Exchange** through the dropdown.



- Select '**F**' Or '**O**' for Future and Option in Derivative Segment respectively through dropdown.

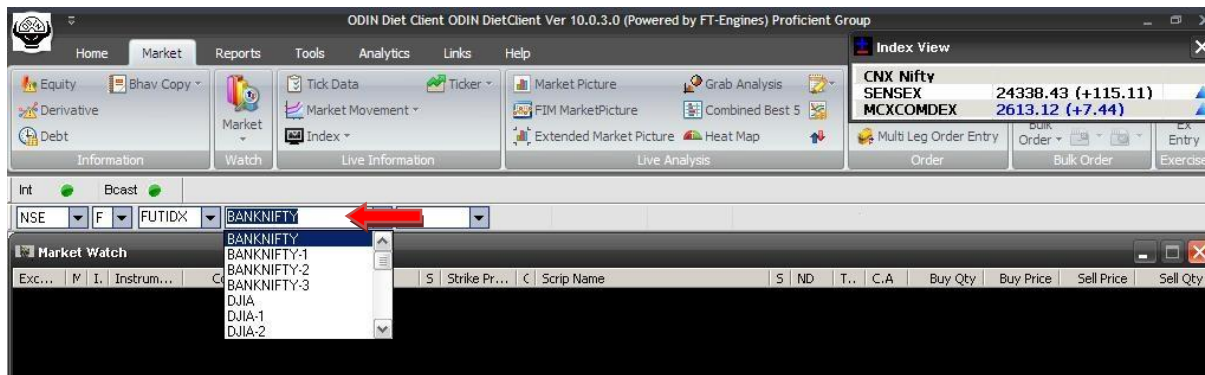


- Select **FUTIDX/FUTSTK** for futures contract or **OPTIDX/OPTSTK** for options contract.

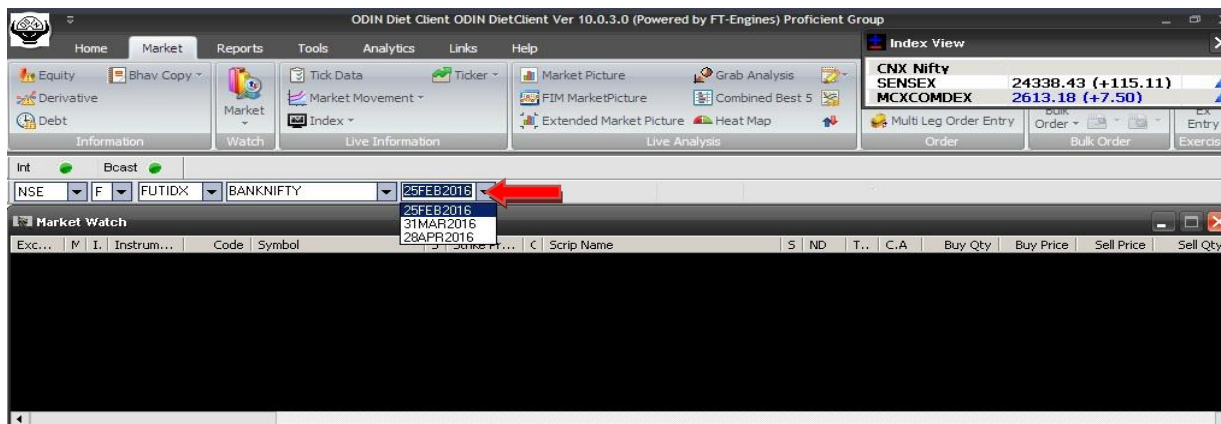




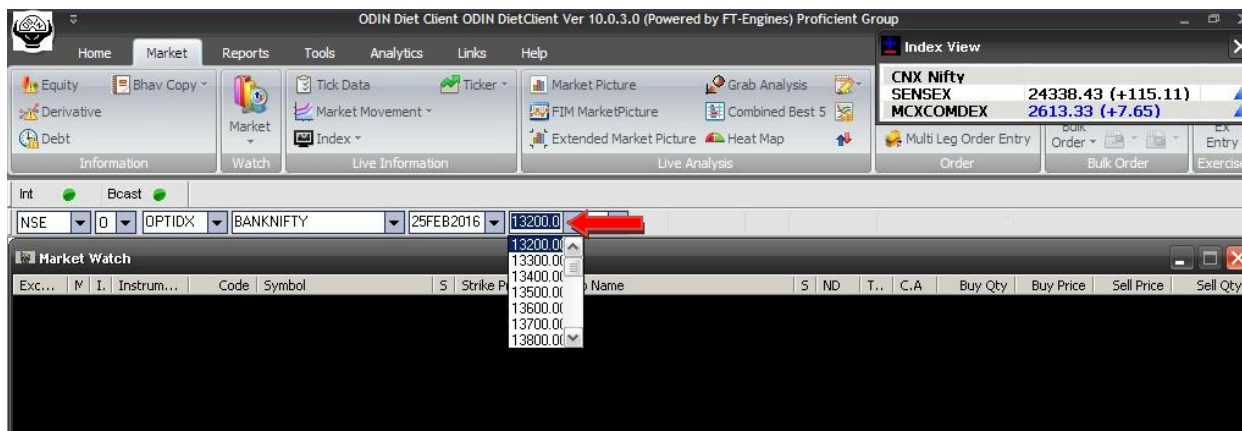
- Select the **security** symbol



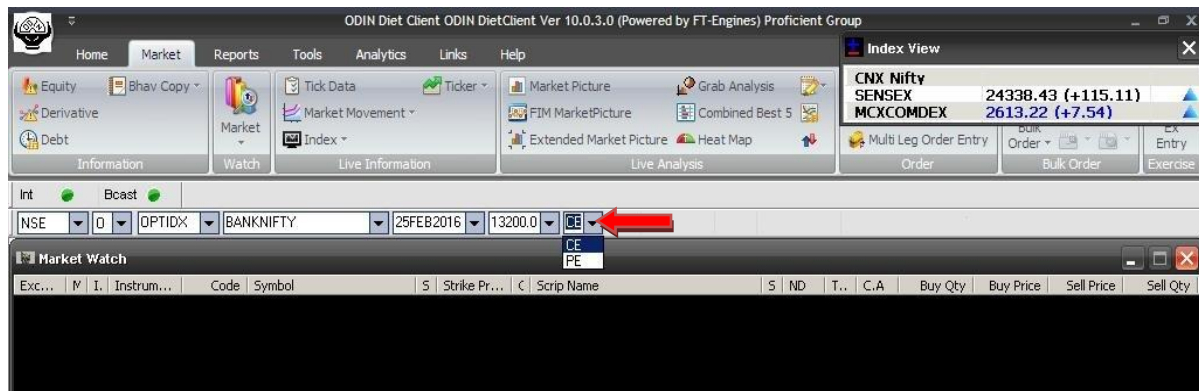
- Select the **expiry date** from the drop-down.



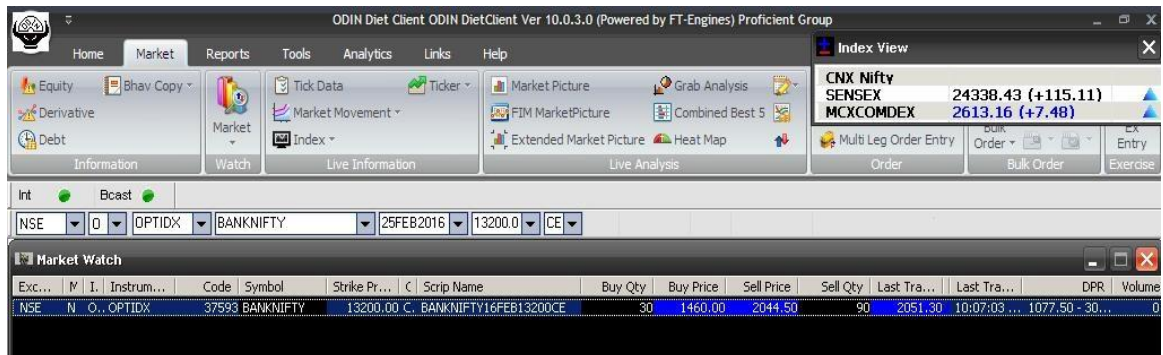
- For Options contract, select the **expiry date** through the drop down.
- Select **Option type** through the dropdown.



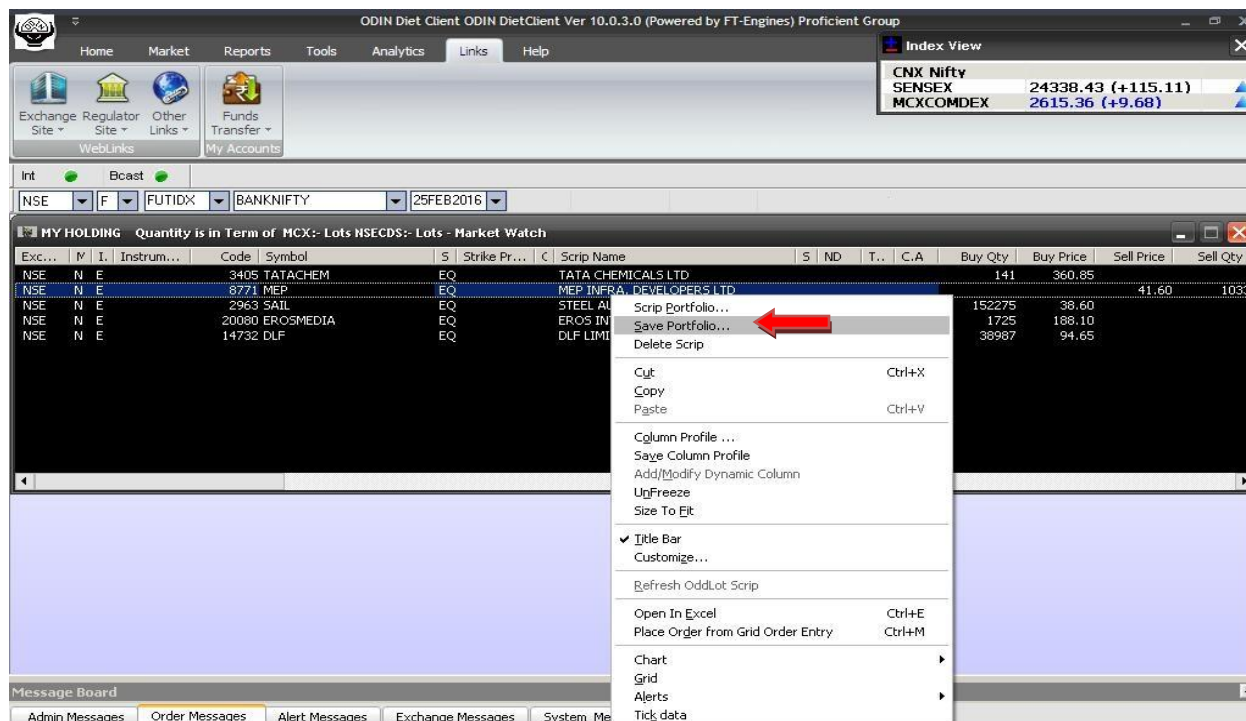
- Select **Option Type** (CE/PE).



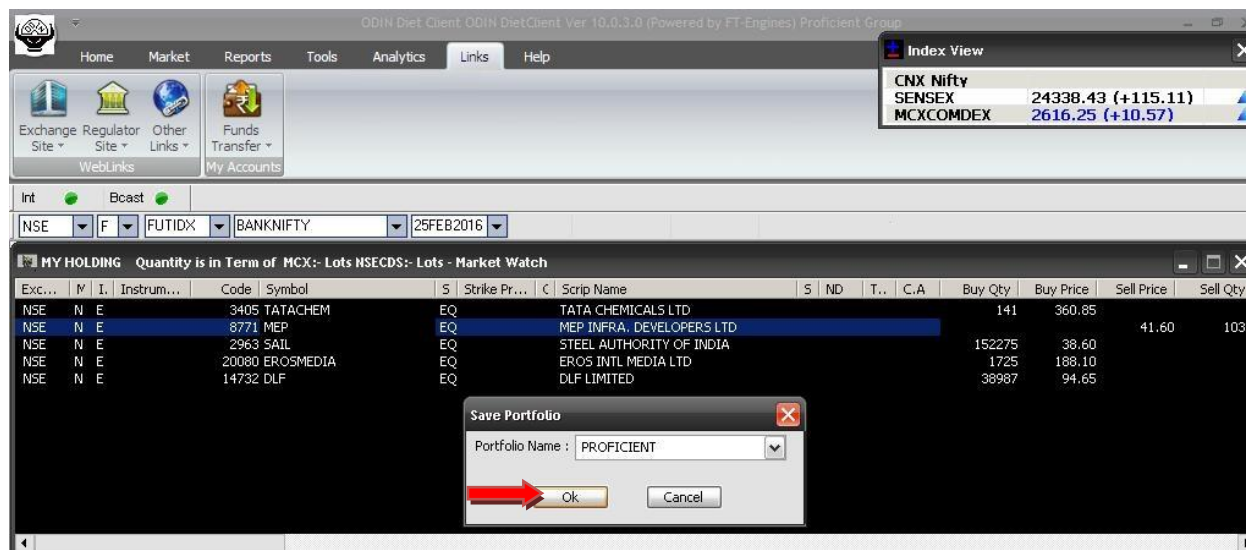
- Hit **Enter** key to add scrip in market watch.



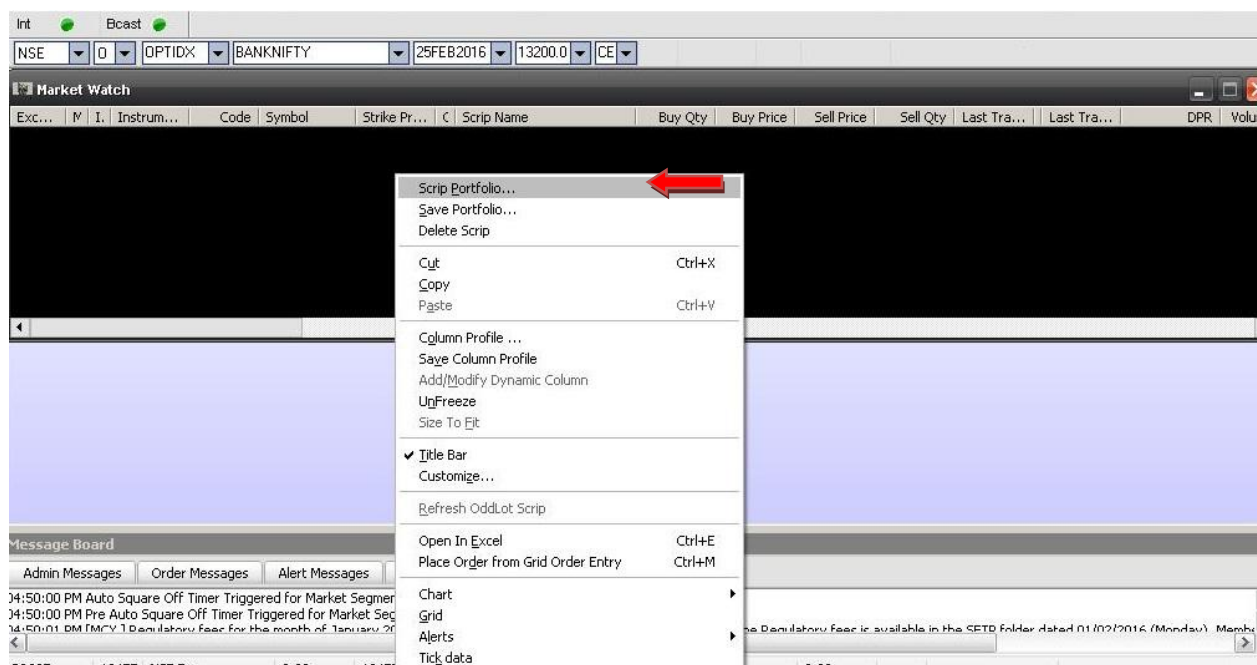
- Price & quantities of the scrip can be seen after addition of the stock and contract in market watch.
- Do **Right click** on market watch.
- Click on **Save portfolio**.



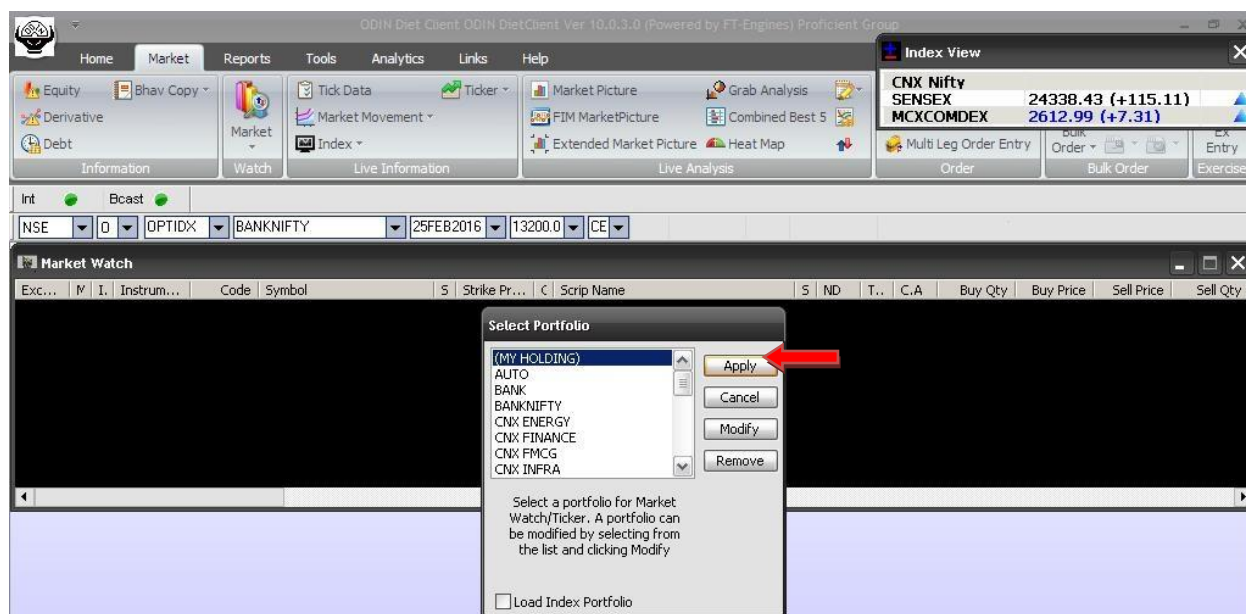
- Select a portfolio name.
- Click on **Ok**.



- To view portfolio, right click on **Market watch**.
- Click on **Scrip Portfolio**.



- Select **Saved** portfolio name.
- Click on **Apply**.





- Do **Right click** on the market watch screen.
- Select **scrip portfolio** to make changes to a Saved Portfolio.
- Profile can also be created by saving the columns of market watch as per your choice.
- Right click on **Market watch** and select **Save column profile** to save profile.
- Give any name to the new Portfolio like “Mid Cap” and click on OK to save changes.
- To make any changes in existing profile, do right click on **Market watch** and select **column profile** to choose profile of your choice.

### Place an Order

- Select **Symbol** on **Market Watch**.
- Hit **F1 & F2** for **Buy & Sell** respectively.
- Buy Screen & Sell screen** would be denoted by **Blue colour & Red colour** respectively.



### Steps to place an order (Buy/Sell)

- Enter required price.
- Select **product type** and click on **submit**.
- The system will ask for authorization; Click on **Yes** to place the order.



## Stop Loss Order

- **Buy Stop Loss:** Select order type, Stop Loss Price greater than Trigger Price or Equal to it.

**MCX Order Entry**

X	Type	Instr. Name	Symbol	Expiry Date	Total Lot	Total Wt (GRM)	GRM Price (10 GRM)	Prot%	Dis. Lot	Dis. Weight
BUY	MCX	SL	FUTCOM	GOLDM	04MAR2016	1	100	27610		0

Product Type: CarryForWard, Trig. Price: 27600.00, Validity: DAY

Buttons: Submit, Clear

Message: New Order

Dialog Box: Submit Order? (Yes/No)

- **Sell Stop Loss:** Select order type SL. Price less than Trigger Price or Equal to it.

**MCX Order Entry**

X	Type	Instr. Name	Symbol	Expiry Date	Total Lot	Total Wt (GRM)	GRM Price (10 GRM)	Prot%	Dis. Lot	Dis. Weight
SELL	MCX	SL	FUTCOM	GOLDM	04MAR2016	1	100	27090		0

Product Type: CarryForWard, Trig. Price: 27100, Validity: DAY

Buttons: Submit, Clear

Message: New Order

Dialog Box: Submit Order? (Yes/No)

## Order Book

- You can check the status of all orders in the order book. The order book reflects pending, rejected and executed order status for buy/sell order for current trading day.
- To open order book, click on **Reports** and select 'Order book' Or Hit 'F3' key (Shortcut).

**Reports**

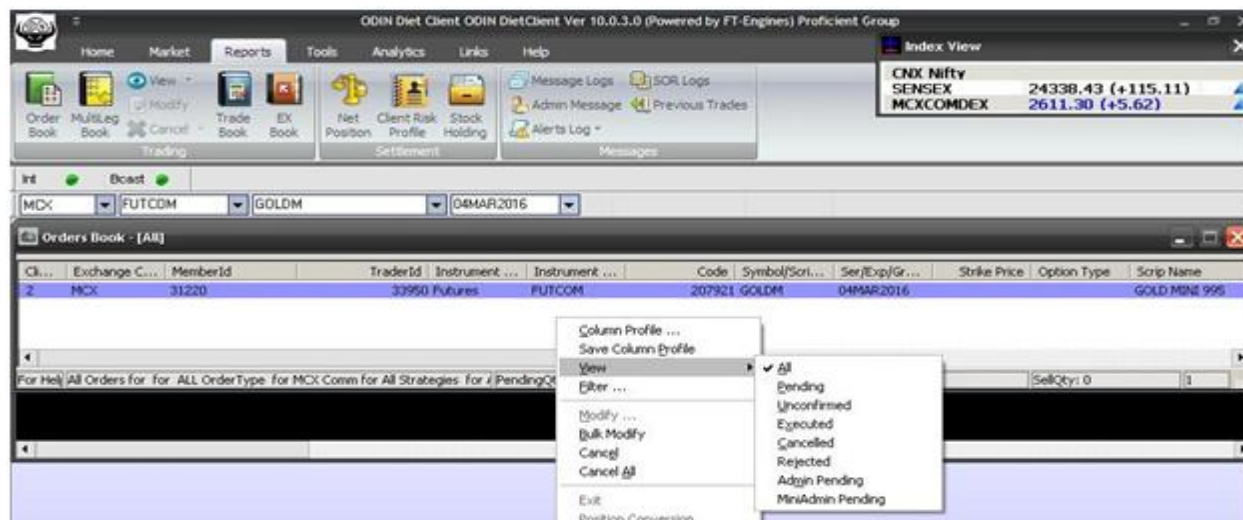
**View Outstanding Orders (F3)**

View Outstanding Orders

MCX, FUTCOM, GOLD, 04FEB2016

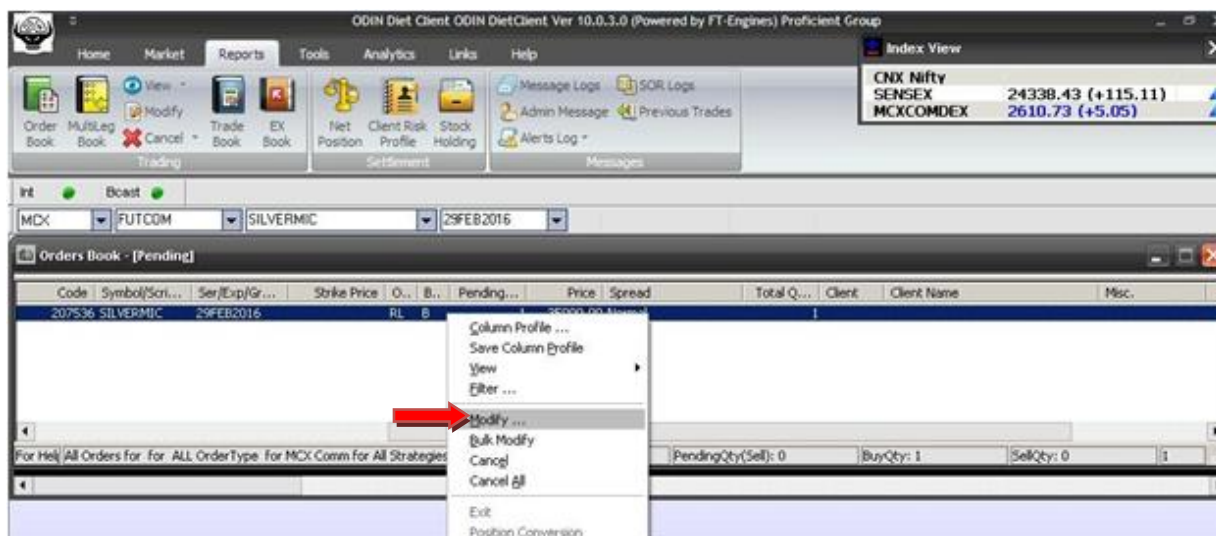
Exp.	P.	S.	Symbol	Strike Price	Script Name	Buy Qty	Buy Price	Sell Price	Sell Qty	Last Tra...	Last Tra...	Open	Volume	Value	%C
MCX	N	P	GOLD	0...	GOLD-995	2	27185.00	27224.00	1	27190	04:59:01	26303.00	2...	0.048	1306.48
NSE	N	E	TATACHEM	EQ	TATA CHEMICALS LTD	141	360.85		360	03:52:40		324.60	390...	314.046	1130.03
NSE	N	E	IRBP	EQ	IRBP INFRA DEVELOPERS LTD				41	03:48:46		33.30	49.90	89.726	37.66
NSE	N	E	SAIL	EQ	STEEL AUTHORITY OF INDIA	152275	38.60	41.60	1033	03:59:49		34.75	42.45	4362.281	1700.76
NSE	N	E	EROSMEDIA	EQ	EROS INTL MEDIA LTD	1725	188.10		188	03:48:40		150.50	229...	657.056	1271.73
NSE	N	E	DUP	EQ	DUP LIMITED	38987	94.65		94	03:56:16		85.20	104.10	10105.186	9578.71

- **Pending order:** Orders which are not traded and pending at exchange.
- **Executed order:** Orders which got traded/ executed in the exchange.
- **Rejected order:** Orders which are rejected by exchange or our RMS team.



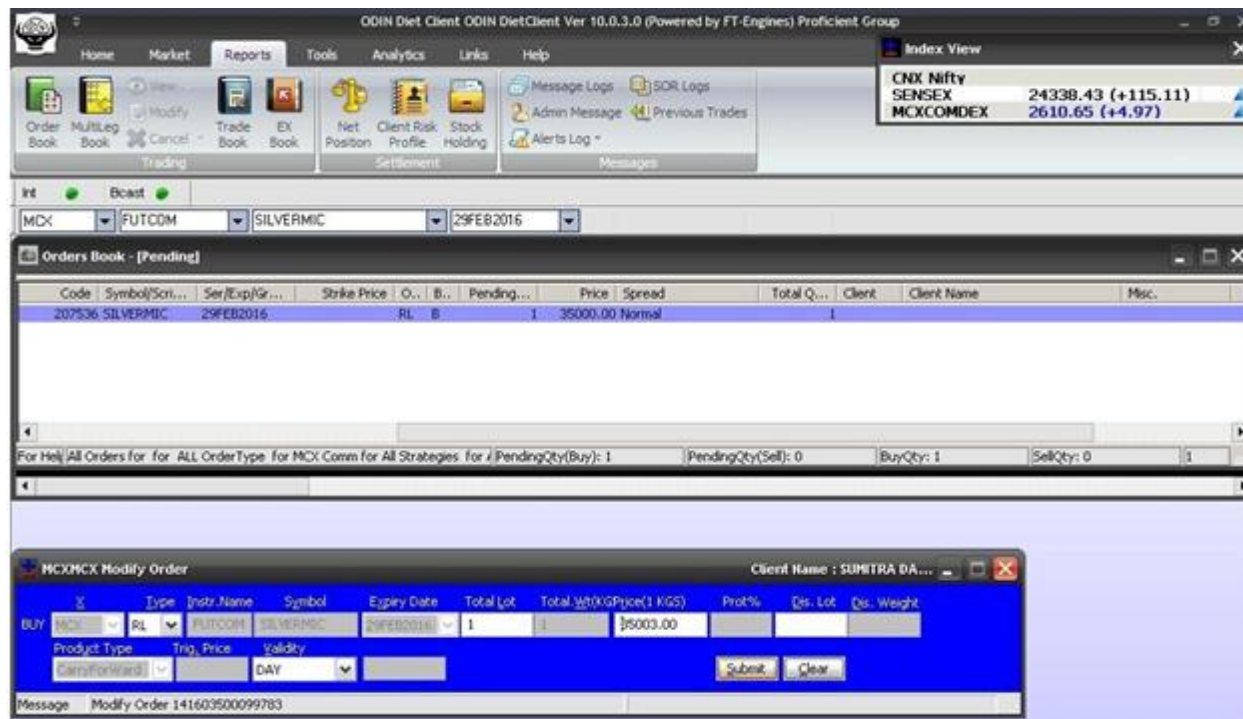
### Order Modification

- The orders submitted to exchange can be modified through order book window.
- Shortcut Key: **Shift+ F3**



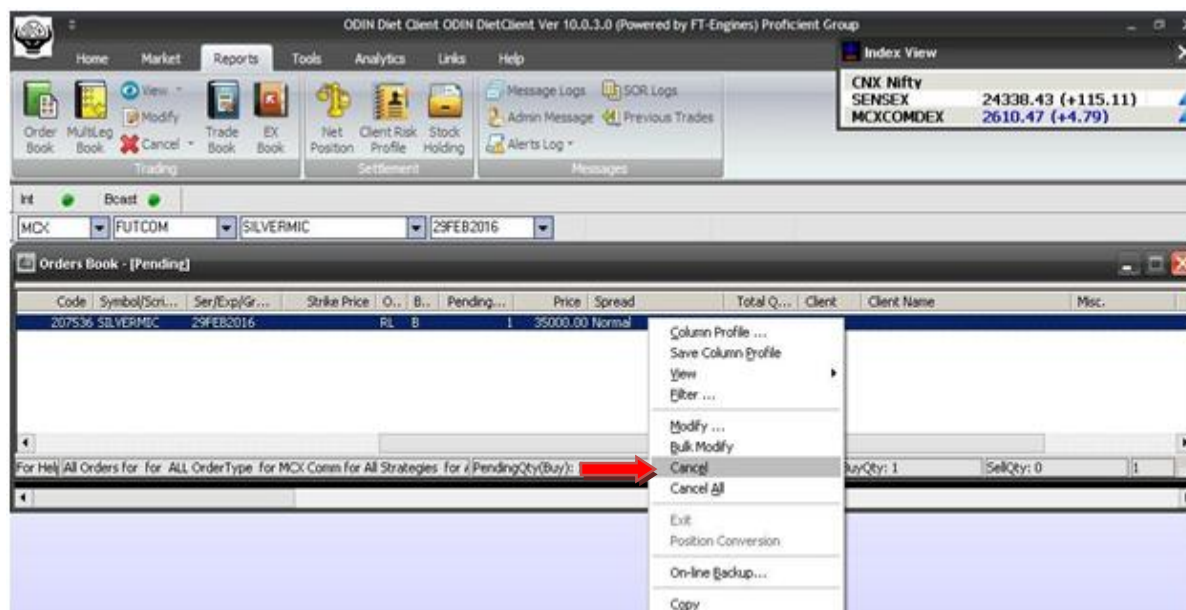
- Do **Right Click** to select row of pending order for a stock in order book.
- Select **Modify**.
- Price and the quantity in the pending orders can be modified.





### Order Cancellation

- The orders submitted to exchange can be cancelled through order book window.
- Do Right Click to select row of pending order for a stock in order book.
- Select 'Cancel' or 'Cancel All' (As applicable).

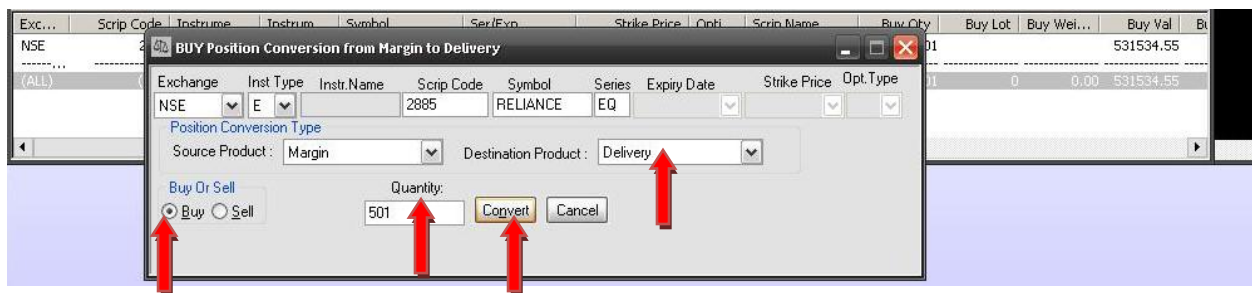
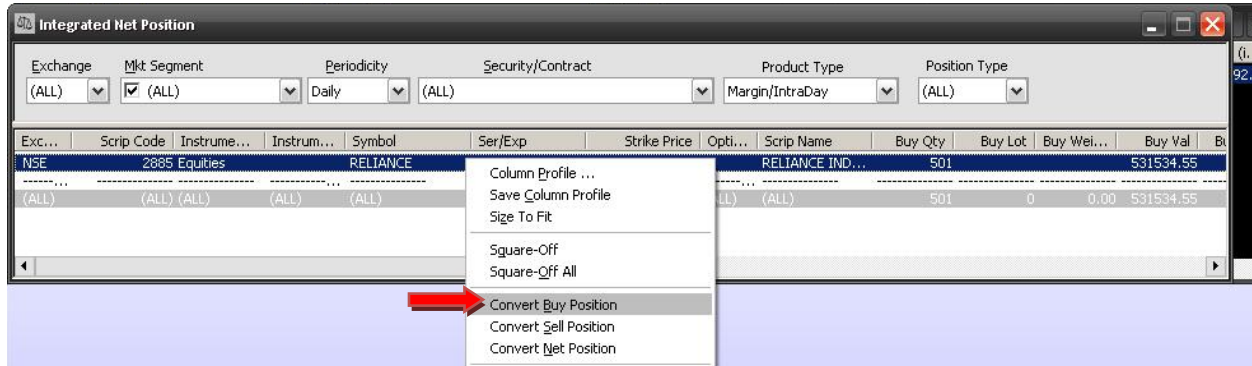






### Position Conversion

- It enables user to convert their open Position within available products as per user's convenience.
- Hit **Alt+F6** to see Net Open Position.
- Right click** on position which is to be converted from Intraday to Delivery or vice versa.



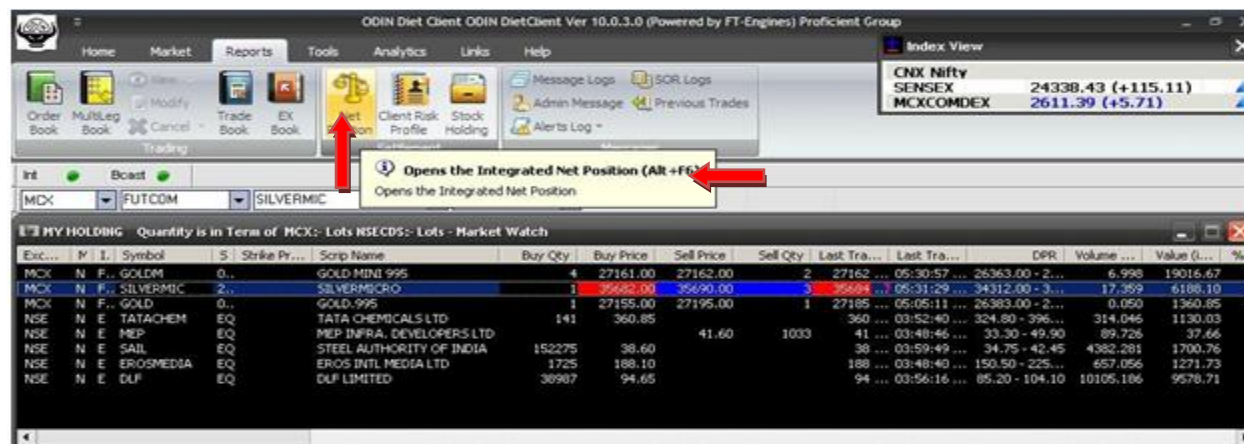
### Trade Book

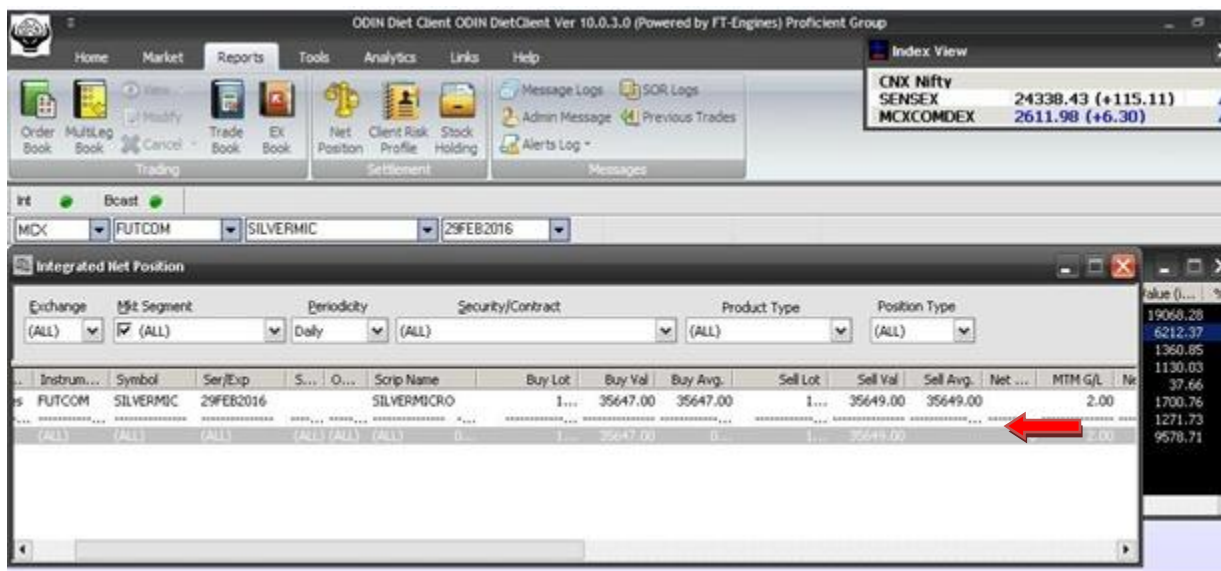
- All trades done on a particular day can be viewed in the trade book window.
- Trade book gives details of order executed at the exchange along with the execution details such as Traded Quantity and Traded Price.
- Click on '**Reports**' and select '**Trade Book**' to open the trade book window (**Shortcut-F8**)



### Net Position

- The integrated net position window gives details of net position such as total buy/sell quantity, buy/sell value, buy/sell average price, net quantity, net price, market price and mark to market gain/loss.
- These details can be viewed for the day and for a settlement.
- For cash segment this window reflects details for the day and for future and commodities till the end of the contract.
- Click on '**Reports**'.
- Select net position or alternatively Hit **Alt+F6**.





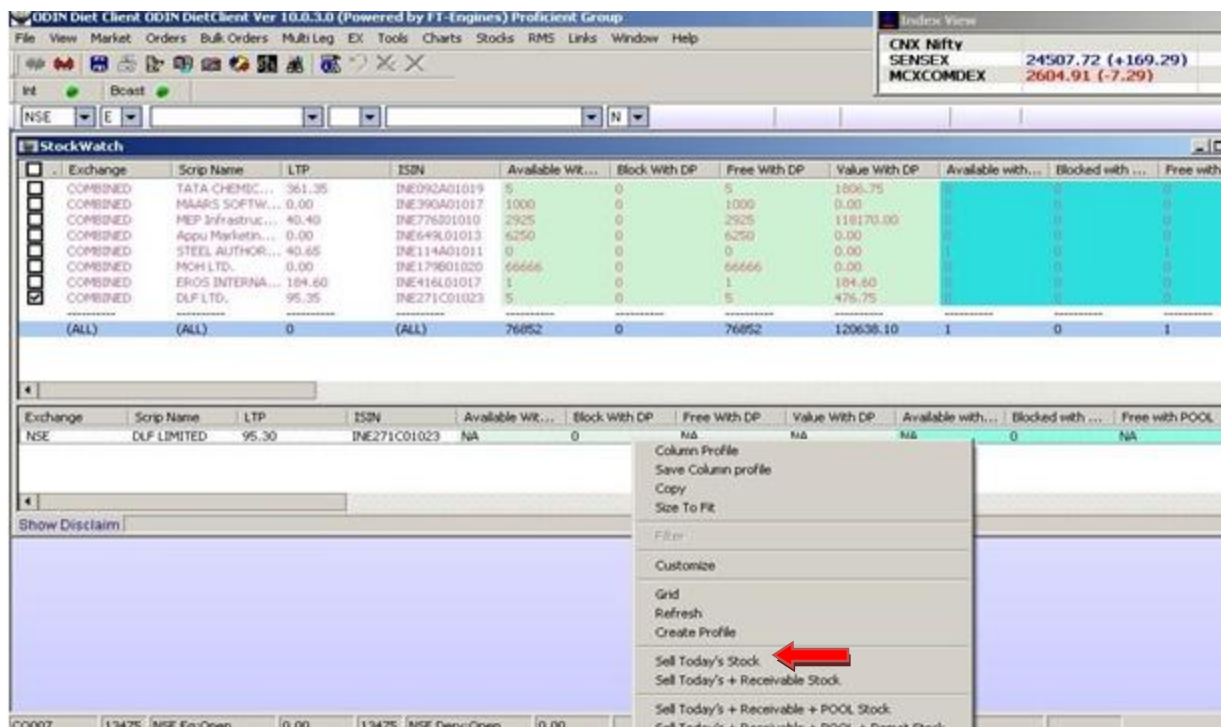
### Stock Watch

- Stock watch provides the details of the cash segment delivery based holding available in pool account.
- Click on 'Reports' and select 'Stock watch'.





- Stocks can be directly sold through a stock watch window.
- Do **Right click** on a particular stock and exchange to sell stocks.
- Click on '**Sell Today's Stock**'.



- In sell order form, **quote price & quantity** and click on '**Submit**'.

### Market Picture

- The market picture window gives details regarding **best 5 buy and sell price and quantities available at a particular point in time**. (Shortcut - F5 )
- Other details available are Total Buyer, Total Seller, Last traded quantity (LTQ), Last traded price (LTP), Volume, value, % change in price, Open price, high price, low price and close price.
- Select the **stock** on the market watch and Click on **Market**.
- Select **Market Picture** (Shortcut- F5 Key).
- Select **Exchange** and **Segment**. Select **E** for equities, **F** for future and **O** for option segment.
- Enter symbol and click on tab to retrieve stock specific price/quantity details.

**Market Picture for FUTCUR USDINR 28AUG2013 Quantity**

NSECDS		F	1077	FUTCUR	USDINR	28AUG2013	N	Refresh
2	102	63.9425	63.9500	25	1	LTQ: 14 @ 63.9425	Open: 64.4000	DPR: 62.8050 - 66.6875
5	181	63.9400	63.9675	85	1	LTT: 05:00:00 PM 23/08/2013	High: 64.7450	Qty: 0
1	10	63.9350	63.9700	1	1	Vol.: 1602244	Low: 63.9375	Value: 0.00
2	26	63.9325	63.9725	20	1	Value: 103140896512.	Close: 63.9900	G/L: 0.00
8	192	63.9300	63.9775	60	2	ATP: 64.3728	OI: 530328	MTM Pos.: 0.00
						% -0.07	% OI: -10.54	
21683		05:00:00 PM 23/08/2013		48299				
Near Month:				Far Month:				

## Log off

- To logoff, Hit **Ctrl+O** key.

ODIN Diet Client ODIN DietClient Ver 10.0.3.0 (Powered by FT-Engines) Proficient Group

Home Market Reports Tools Analytics Links Help

Logoff (Ctrl+O) Logoff from the system

MCX FUTCOM GOLDM 04MAR2016

Market Watch

Exc...	Symbol	S	Strike Pr...	Buy Qty	Buy Price	Sell Price	Sell Qty	Last Tra...	Trend I...	Last Tra...	DPR	Volume ...	Value (i...	% C...	Avg. Tr...	High
MCX2...	GOLDM	0..		1	27292.00	27298.00	2	27295.00		07:17:09 ...	26515.00 - 2...	10.703	29293.67	-0.15	27369.59	2748...

Index View

CNX Nifty  
SENSEX  
MCXCOMDEX 2602.23 (-9.97)

- The System will ask for confirmation.
- Click on **Yes**.

ODIN Diet Client ODIN DietClient Ver 10.0.3.0 (Powered by FT-Engines) Proficient Group

Home Market Reports Tools Analytics Links Help

Logoff (Ctrl+O) Logoff from the system

MCX FUTCOM GOLDM 04MAR2016

Market Watch

Exc...	Symbol	S	Strike Pr...	Buy Qty	Buy Price	Sell Price	Sell Qty	Last Tra...	Trend I...	Last Tra...	DPR	Volume ...	Value (i...	% C...	Avg. Tr...	High
MCX2...	GOLDM	0..		6	27290.00	27293.00	2	27293.00		07:17:28 ...	26515.00 - 2...	10.733	29375.55	-0.15	27369.38	2748...

Index View

CNX Nifty  
SENSEX  
MCXCOMDEX 2601.10 (-11.10)

DietOdin

Are you sure you want to logoff?

Yes No